



AUTOMOTIVE SYSTEMS

SERVICE BAYS • SERVICE DEPARTMENTS
SHOWROOMS • WASH BAYS



SERVICE BAYS

SHOP FLOOR HIGH-GLOSS DURABLE EPOXY SYSTEM

Mechanics take automobiles apart; fluids end up on the floor and parts and tools are dropped. **SHOP FLOOR** is a 1/16" thick industry standard for protecting concrete in areas that need a tough work surface with slip-resistant texture. Our version locks in the broadcast with a polyaspartic, which provides UV stability for exposure through large, open garage doors and chemical resistance to oil, transmission, and brake fluids.

SYSTEM ATTRIBUTES



ADHESION:
> 400 psi



COEFFICIENT OF FRICTION:
> 0.55



COMPRESSIVE STRENGTH:
11,600 psi



ELONGATION:
5 - 10%



FLAMMABILITY:
Self-extinguishing on concrete



FLEXIBILITY 1/8" BEND MANDREL:
PASS



FLEXURAL STRENGTH:
12,800 psi



GLOSS:
92 - 95



HARDNESS:
Shore D 70, 86



TABER ABRASION:
30 mg loss

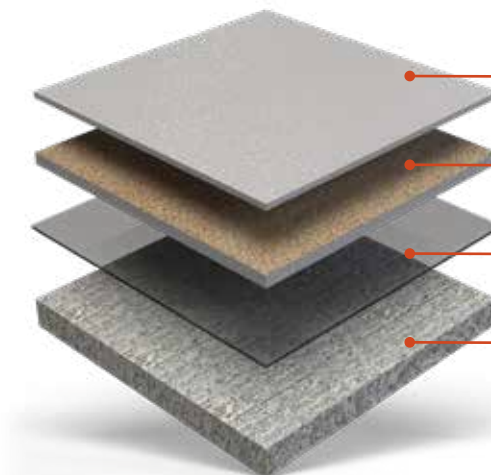


TENSILE STRENGTH:
9,600 psi



UV RESISTANT

SYSTEM BUILD



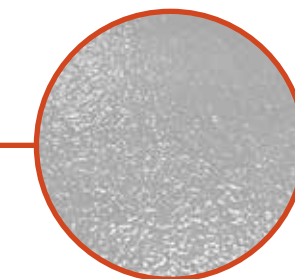
TOPCOAT:
POLYASPARTIC HS, GLOSS, LIGHT GRAY

BASECOAT/BROADCAST:
1100SL 100% SOLIDS EPOXY,
LIGHT GRAY & SILICA SAND

PRIMER:
1000HS 100% SOLIDS EPOXY PRIMER, CLEAR

PREPARED SUBSTRATE:
CSP 3+

COLOR SELECTIONS



To view all color selections refer to the **Simiron Product Color Guide**.

SERVICE DEPARTMENTS

SIMFLAKE SB DECORATIVE CHIP

SIMFLAKE SB is a single-broadcast system that uses **Simiron Decorative Chip**, which is available in a wide variety of blends that pair well with any color scheme. The featured system has a gloss finish that is easy to maintain, but optional satin and non-skid texture is available for continuous people movement and car drop/pickup lanes.

SYSTEM ATTRIBUTES



DURABLE:
30 mg loss



ADHESION:
> 400 psi



COEFFICIENT OF FRICTION:
> .55



COMPRESSIVE STRENGTH:
11,600 psi



ELONGATION:
5 - 10%



FLAMMABILITY:
Self-extinguishing on concrete



FLEXIBILITY 1/8" BEND MANDREL:
PASS



FLEXURAL STRENGTH:
12,800 psi



GLOSS:
92 - 95°



HARDNESS:
Shore D > 70, 86

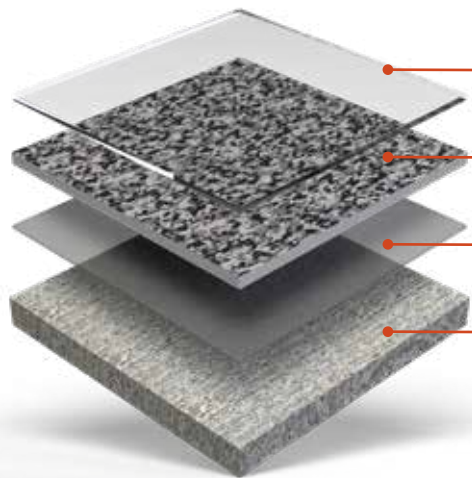


TENSILE STRENGTH:
> 9,600 psi



UV RESISTANT

SYSTEM BUILD



TOPCOAT:
POLYASPARTIC HS, GLOSS, CLEAR

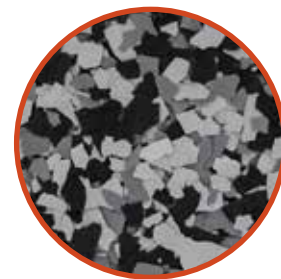
BASECOAT/BROADCAST:
1100SL 100% SOLIDS EPOXY, PIGMENTED & DECORATIVE CHIP

PRIMER:
1000HS 100% SOLIDS EPOXY PRIMER, CLEAR

PREPARED SUBSTRATE:
CSP 3+

COLOR SELECTIONS

To view all color selections refer to the **Simiron Product Color Guide**.







SHOWROOMS

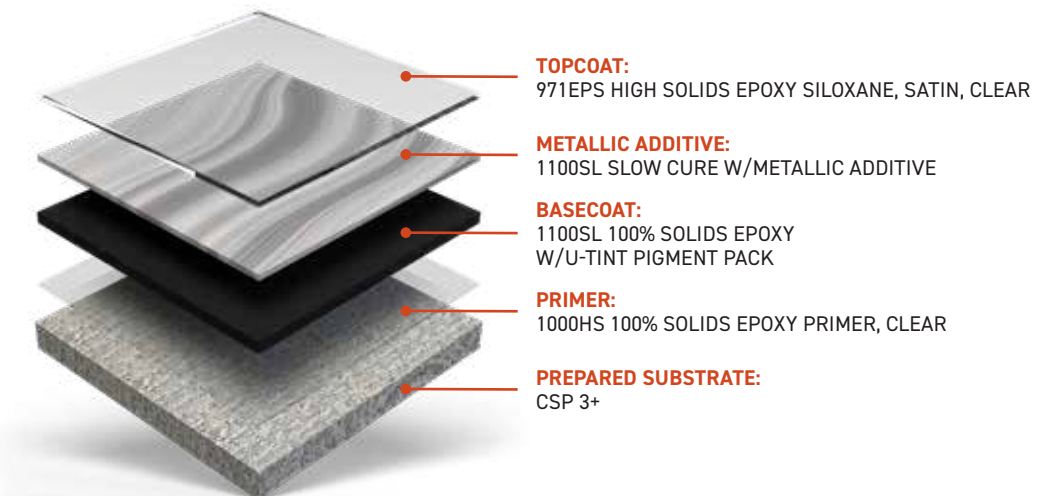
SIMFLOOR METALLIC METALLIC PIGMENT

Customers expect an engaging environment that showcases vehicles. **SIMFLOOR METALLIC** accents a space and provides an attractive background for parked cars and trucks by featuring **Metallic Additive**. With multiple color options, you can certainly find at least one that highlights any palette. This system is around 60 mils thick and will support heavy items for extended periods of time. A light, consistent texture from the satin topcoat provides traction and an appearance that is sustainable with basic care.

SYSTEM ATTRIBUTES

 DURABLE: 40 mg loss	 ADHESION: > 400 psi	 COEFFICIENT OF FRICTION: > .05	 COMPRESSIVE STRENGTH: > 11,600 psi	 ELONGATION: 5 - 10%	 FLAMMABILITY: Self-extinguishing on concrete
 FLEXIBILITY 1/8" BEND MANDREL: PASS	 FLEXURAL STRENGTH: > 12,800 psi	 GLOSS: 88°	 HARDNESS: Shore D: > 75	 TENSILE STRENGTH: 9,600 psi	 UV RESISTANT

SYSTEM BUILD



COLOR SELECTIONS

To view all color selections refer to the **Simiron Product Color Guide**.

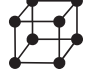












WASH BAYS

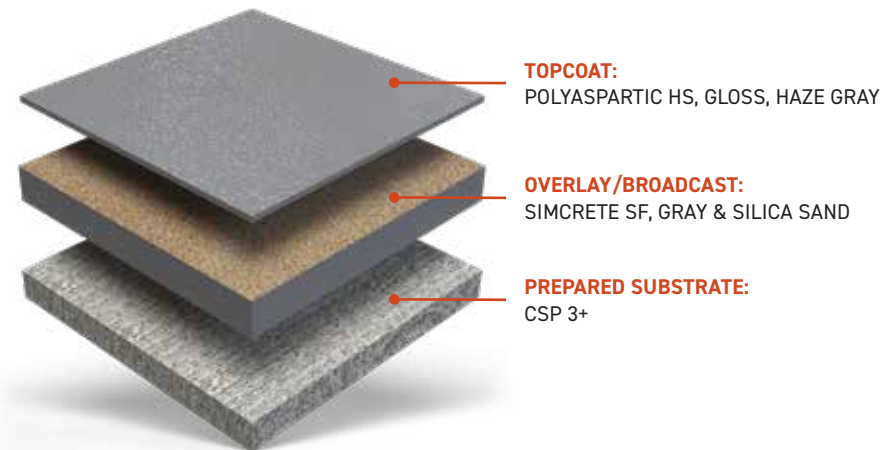
SIMCRETE SF URETHANE CEMENT

Detailers stand on floors that are constantly wet. **SIMCRETE SF** is a self-leveling urethane cement that is broadcast to rejection with silica sand to achieve a 1/4" heavy-duty system with a slip-resistant texture suited for wet environments. A polyaspartic is used to lock in the broadcast, which provides UV stability and resistance to any chemicals used to detail cars. The system can also withstand moisture vapor transmission.

SYSTEM ATTRIBUTES

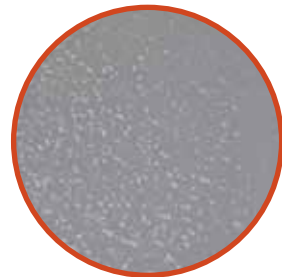
 BOND STRENGTH: 100% Concrete Failure	 COEFFICIENT OF FRICTION: > 0.63	 COMPRESSIVE STRENGTH: > 8,300 psi	 FLAMMABILITY: Self-extinguishing on concrete	 FLEXURAL STRENGTH: > 2,550 psi	 GLOSS: 92 - 95°
 IMPACT STRENGTH: > 160 lbs/inch	 RESISTANCE TO FUNGI GROWTH: PASS	 TABER ABRASION: 30 mg loss	 TENSILE STRENGTH: > 1,000 psi	 UV RESISTANT	

SYSTEM BUILD



COLOR SELECTIONS

To view all color selections refer to the [Simiron Product Color Guide](#).



CHEMICAL RESISTANCE CHART

SIMIRON SYSTEMS	SIMFLAKE SB EPOXY	SIMFLAKE SB POLYUREA	SIMFLOOR HB-EPOXY	SIMFLOOR HWU	SIMFLOOR ESD	SIMFLOOR EPOXY SILOXANE	SHOP FLOOR
CHEMICAL	RESULTS	RESULTS	RESULTS	RESULTS	RESULTS	RESULTS	RESULTS
10% Acetic Acid	G	G	G	F	F	E	G
Vinegar	G	G	G	G	G	G	G
10% Citric Acid	G	G	G	G	G	G	G
10% Hydrochloric Acid	G	G	G	E	E	E	G
30% Hydrochloric Acid (muriatic)	G	G	G	E	E	E	G
10% Nitric Acid	NR	NR	G*	G	G	G	NR
50% Phosphoric Acid	F	F	F	G	G	G	F
10% Sulfuric Acid	F	F	G	F	F	G	F
37% Sulfuric Acid	F	F	F	F	F	G	F
70% Sulfuric Acid	F	F	F	F	F	G*	F
20% Ammonium Nitrate	E	E	E	E	E	E	E
20% Sodium Chloride	E	E	E	E	E	E	E
50% Sodium Hydroxide	G	G	E	E	E	E	G
Methyl Ethyl Ketone	E	E	G	E	E	E	E
Xylene	E	E	F	E	E	E	E
Ethylene Glycol	E	E	G	E	E	E	E
Isopropyl Alcohol	E	E	F	E	E	E	E
Mineral Spirits	F	F	E	E	E	E	F
Brake Fluid	E	E	F	G	G	G	E
Transmission Fluid	E	E	E	E	E	E	E
Motor Oil	E	E	E	E	E	E	E
50:1 Gas/Oil Mixture	E	E	E	E	E	E	E
E85 Gasoline	E	E	E	E	E	E	E
E95 Gasoline	E	E	E	E	E	E	E
Unleaded Gasoline	E	E	G	E	E	E	E
Skydrol	E	E	E	E	E	E	E
Betadine	E	E	G*	G*	G*	G*	E
Bleach	E	E	E	E	E	E	E
Urine	E	E	E	E	E	E	E
Coffee	E	E	E	E	E	E	E
Cola	E	E	E	E	E	E	E
Ketchup	E	E	G	F	F	E	E
Mustard	G*	G*	G	G	G	G*	G*
Red Wine	E	E	E	E	E	E	E

*Stain is only defect.

SIMIRON SYSTEMS	SIMCRETE SL	SIMCRETE SL FLAKE	SIMCRETE SL QUARTZ	SIMQUARTZ DB	SIMCRETE SL+TC	SIMFLOOR METALLIC
CHEMICAL	RESULTS	RESULTS	RESULTS	RESULTS	RESULTS	RESULTS
10% Acetic Acid	G	G	G	F	E	E
Vinegar	G	G	G	F	E	G
10% Citric Acid	G	G	G	E	E	G
10% Hydrochloric Acid	G	G	G	E	E	E
30% Hydrochloric Acid (muriatic)	G	G	G	E	E	E
10% Nitric Acid	NR	NR	NR	NR	G	G
50% Phosphoric Acid	F	F	F	NR	G	G
10% Sulfuric Acid	F	F	F	E	G	G
37% Sulfuric Acid	F	F	F	G	F	G
70% Sulfuric Acid	F	F	F	NR	NR	G*
20% Ammonium Nitrate	E	E	E	E	E	E
20% Sodium Chloride	E	E	E	E	E	E
50% Sodium Hydroxide	G	G	G	G	E	E
Methyl Ethyl Ketone	E	E	E	E	F	E
Xylene	E	E	E	E	E	E
Ethylene Glycol	E	E	E	E	E	E
Isopropyl Alcohol	E	E	E	E	E	E
Mineral Spirits	F	F	F	E	E	E
Brake Fluid	E	E	E	G	E	G
Transmission Fluid	E	E	E	E	E	E
Motor Oil	E	E	E	E	E	E
50:1 Gas/Oil Mixture	E	E	E	E	E	E
E85 Gasoline	E	E	E	E	E	E
E95 Gasoline	E	E	E	E	E	E
Unleaded Gasoline	E	E	E	E	E	E
Skydrol	E	E	E	E	E	E
Betadine	E	E	E	G*	E	G*
Bleach	E	E	E	E	E	E
Urine	E	E	E	E	E	E
Coffee	E	E	E	E	E	E
Cola	E	E	E	E	E	E
Ketchup	E	E	E	F	E	E
Mustard	G*	G*	G*	G	E	G*
Red Wine	E	E	E	E	E	E

*Stain is only defect.

KEY

E = Excellent

G = Good

F = Fair

NR = Not Recommend



SIMIRON.COM | SHOP.SIMIRON.COM



SIMIRON INC.
CORPORATE HEADQUARTERS
3000 Research Drive
Rochester Hills, MI 48309
(248) 686-3600

MADE IN THE USA

