



EQUIPMENT & DIAMOND TOOLING

PRODUCT CATALOG



INDUSTRIAL FLOOR GRINDERS

SIMIRON'S Industrial Grinders are designed for reliability and longevity. When paired with Simiron diamond tools, our planetary grinders provide an even floor surface. Our assortment of flexible grinders provides answers for every floor or job.



SG680 PROPANE Industrial Floor Grinder

The **SG680** propane floor grinder is engineered for the fastest and most effective removal of old concrete floors. It features an aluminum alloy gearbox, planetary gear drive, and Briggs & Stratton Vanguard 656cc engine. Integrated weights assist raise or reduce grinding pressure while grinding and polishing concrete floors.

Specifications

| | |
|-----------------------------------|----------------|
| POWER SOURCE | Propane |
| OUTPUT POWER | 20 HP (656 CC) |
| REQUIRED CIRCUIT | (3) 8.5" Heads |
| RPM | 1,750 - 3,150 |
| GRINDING WIDTH | 680mm [27"] |
| GRINDING DISCS | 3 |
| MACHINE WEIGHT | 950 lbs |
| Recommended Extractors - SV5, SV4 | |



SG780 Industrial Floor Grinder

The **SG780** electric floor grinder is manufactured by SIMIRON and uses 480-volt, 3-phase electricity and a 20-horsepower motor to operate a 4-disc planetary grinding head. The **SG780** accepts diamond tools and polishing pads. It also has a 6-gallon internal water capacity and a robust dust shield to reduce dust. It can be used for wet or dry grinding as well as vacuum grinding.

Specifications

| | |
|-----------------------------------|-----------------------------|
| POWER SOURCE | Electric |
| OUTPUT POWER | 20 HP (15 kW) |
| REQUIRED CIRCUIT | 3 Phase/460 volt/ 22 AMP |
| RPM | 300 - 1,800 |
| GRINDING WIDTH | 780 mm [31"] |
| GRINDING DISCS | 4 |
| MACHINE WEIGHT | 880 lbs |
| Recommended Extractors - SV5, SV4 | |



SG600 Industrial Floor Grinder

The **SG600** electric floor grinder prepares concrete for coating materials, removes existing coatings and underlayments, and polishes concrete. This grinder can grind wet or dry and has a 3-disc planetary grinding head. It has a 6-gallon water capacity and a vacuum port for dry grinding. The **SG600** is compatible with SIMIRON vacuum systems.

Specifications

| | |
|--|--------------------------------------|
| POWER SOURCE | Electric |
| OUTPUT POWER | 7.5 HP (5.5 kW) |
| REQUIRED CIRCUIT | 1 or 3 Phase/220-240 volts/19 AMP |
| RPM | 300 - 1,600 |
| GRINDING WIDTH | 600 mm [25"] |
| GRINDING DISCS | 3 |
| MACHINE WEIGHT | 620 lbs |
| Recommended Extractors - SV5, SV4, SV3 | |

INDUSTRIAL FLOOR GRINDERS

SIMIRON'S industrial Grinders are designed for reliability and longevity. When paired with Simiron diamond tools, our planetary grinders provide an even floor surface. Our assortment of flexible grinders provides answers for every floor or job.



SG500 Industrial Floor Grinder

The **SG500** concrete floor grinder is a great machine for smaller jobs and homes, offices, shops or warehouses. It can be used for coarse grinding, preparation, maintenance and polishing, making it very versatile. The size and weight allow for easy loading and unloading at the jobsite or to carry up to a mezzanine or landing. This machine uses standard 220 volt single phase power so no need for 240v electrical connection!

Specifications

| | |
|------------------|-----------------------------|
| POWER SOURCE | Electric |
| OUTPUT POWER | 5.5 HP [4 kW] |
| REQUIRED CIRCUIT | 1 Phase/220-240 Volt/19 AMP |
| RPM | 300 - 1,600 |
| GRINDING WIDTH | 480 mm [18"] |
| GRINDING DISCS | 3 |
| MACHINE WEIGHT | 410 lbs |

Recommended Extractors - SV4, SV3



SG20 Industrial Floor Grinder

The **SG20** is a great machine for medium-sized grinding jobs. This machine is a double head (6 pads), cross rotation, which greatly improves work efficiency and saves labor costs. It's an economical and practical choice for many users.

Specifications

| | |
|------------------|-----------------------------|
| POWER SOURCE | Electric |
| OUTPUT POWER | 4 HP [3 kW] |
| REQUIRED CIRCUIT | 1 Phase/220-240 Volt/15 AMP |
| RPM | 300 - 1,600 |
| GRINDING WIDTH | 520 mm [20"] |
| GRINDING DISCS | 2 |
| MACHINE WEIGHT | 300 lbs |

Recommended Extractors - SV4, SV3



SG16 Industrial Floor Grinder

The **SG16** Grinder is a lightweight 110-volt grinder perfect for commercial projects, garages, basements, and difficult to access areas. The **SG16** utilizes innovative engineering and design to maximize user safety and productivity. The unique carriage design includes a floating head, which provides increased surface contact and reduced amp draw resulting in faster and more efficient operation.

Specifications

| | |
|------------------|---------------------------|
| POWER SOURCE | Electric |
| OUTPUT POWER | 1.5 HP |
| REQUIRED CIRCUIT | 1 Phase/110 volt/ 9.5 AMP |
| RPM | 165 - 300 |
| GRINDING WIDTH | 400 mm [16"] |
| GRINDING DISCS | 1 |
| MACHINE WEIGHT | 135 lbs |

Recommended Extractors - SV3

INDUSTRIAL DUST EXTRACTORS

SIMIRON Dust Extractors are designed to clean construction areas and be connected to electrical machines such as drills, grinders etc. The machine is suitable for picking up dry, non-flammable dust and debris in and indoor environment. It is not suitable for picking up liquids.



SV5 Dual Stage Industrial Extractor

The **SV5** dust extractor is designed to clean construction areas and is connected to tools and machines such as drills, grinders etc. With H12 HEPA filter and a drop-down longopac bag compatible for easy and fast loading/unloading, this tool is great for your home or workspace. The three-stage filtration is high efficiency at removing large particles and high suction capacity, which makes it ideal for light to medium duty applications.

Specifications

| | |
|-----------------|-------------------------|
| POWER SOURCE | Electric |
| OUTPUT POWER | 1 Phase/110 volt/20 AMP |
| MOTOR OUTPUT | 5 HP (3.6 Kw) |
| VACUUM (MBAR) | 320 |
| WATER LIFT | 100 in. |
| CFM | 345 |
| FILTER CAPACITY | 0.3 um |
| FILTER TYPE | H13 HEPA |
| WEIGHT | 190 lbs |
| BAG TYPE | Continuous |

Recommended Grinders - SG780, SG600, SG680 P



SV4 Industrial Extractor With Pre-Separator

The **SV4** vacuum is the industry standard for dust collecting. It utilizes centrifugal force and gravity to remove heavy, coarse particles from its airstream, resulting in a filter with a longer life and superior cleaning capabilities. Equipped with a Pre-Separator, the **SV4** is ideal for applications requiring the collection of low amounts of particles, such as food processing plants, boiler rooms, and industrial facilities.

Specifications

| | |
|-----------------|-------------------------|
| POWER SOURCE | Electric |
| OUTPUT POWER | 1 Phase/110 volt/20 AMP |
| MOTOR OUTPUT | 4 HP (3 Kw) |
| VACUUM (MBAR) | 230 |
| WATER LIFT | 100 in. |
| CFM | 265 |
| FILTER CAPACITY | 0.3 um |
| FILTER TYPE | H13 HEPA |
| WEIGHT | 175 lbs |
| BAG TYPE | Continuous |

Recommended Grinders - SG780, SG600, SG500, SG680 P



SV3 Concrete Dust Extractor

The **SV3** utilizes a single HEPA filter system for efficient cleaning performance. It is designed for use with SIMIRON Floor Preparation Equipment, or any application where dust collection is needed. The **SV3** is only for DRY materials, and should never be used for wet applications.

Specifications

| | |
|-----------------|-------------------------|
| POWER SOURCE | Electric |
| OUTPUT POWER | 1 Phase/110 volt/20 AMP |
| MOTOR OUTPUT | 4 HP (3 Kw) |
| VACUUM (MBAR) | 200 |
| WATER LIFT | 100 in. |
| CFM | 265 |
| FILTER CAPACITY | 0.3 um |
| FILTER TYPE | H13 HEPA |
| WEIGHT | 125 lbs |
| BAG TYPE | Continuous |

Recommended Grinders - SG500, SG20, SG16

UNITED STATES AGGREGATE MAP FOR DIAMOND BLADE SELECTION

Contractors that cut and grind concrete must select diamond blades and abrasives based on the aggregate hardness in their region.

Identifying the aggregate type in concrete or asphalt affects blade performance and bit selection. Stone, gravel, and sand used in concrete vary by area and geographic region.

YELLOW Series

Extremely Hard
Concrete
MOHS 9

BLUE Series

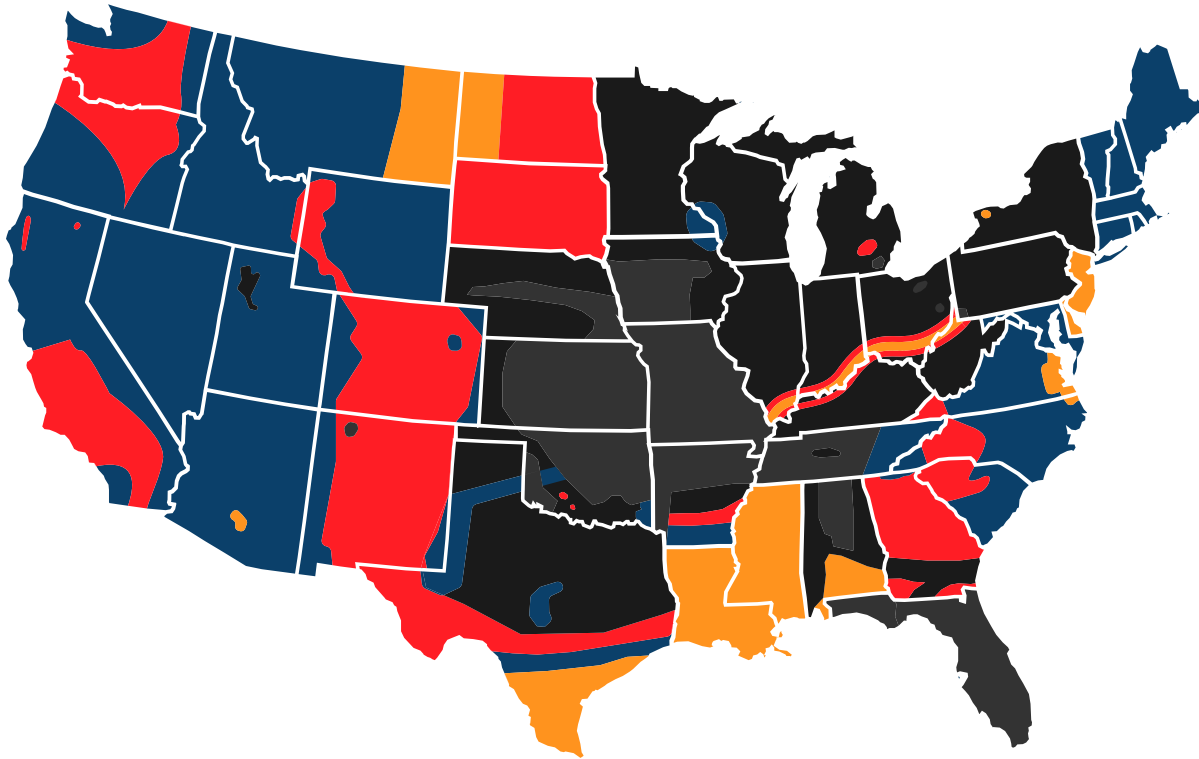
Medium to Hard
Concrete
MOHS 7

RED Series

Medium
Concrete
MOHS 6

BLACK Series

Soft
Concrete
MOHS 5



This map illustrates the range of abrasive and medium-hard aggregates found around the world, from the soft, talc-like talc to the hard, flint-like chert, and the different medium-to-medium-hard levels and abrasive characteristics in between. As a general guidance for sawing and drilling blade selection, it illustrates the aggregate and hardness that are likely to be encountered in each state. Even while aggregate size and type might vary widely within a particular region, it is typically true that aggregates in specific geographic regions are similar in size and composition. Aggregate from across the United States is increasingly being delivered to this region due to a lack in local supply of a particular sort of material. This aggregate map provides an overview of the most frequent aggregates in the area.

METAL BOND

Simiron has a complete range of metal bond tooling designed to ensure maximum life and performance rate for all concrete floors depending on hardness. Every metal bond series corresponds with the MOH's hardness scale, helping contractors confidently know what metal bond series to use on every concrete grinding project.

BLACK Series—Soft Concrete

MOHS 5



DIAMOND Metal Double Segment—Soft Bond

| GRIT | DESCRIPTION | PART # |
|------|--|----------|
| 6 | Designed for coating removal, thin mastic removal, exposing large aggregate, and prepping concrete for applying coatings 10-25 mils. | 40006839 |
| 16 | Designed for coating removal, thin mastic removal, exposing large aggregate, and prepping concrete for applying coatings 10-20 mils. | 40001099 |
| 30 | Designed for coating removal, thin mastic removal, exposing large aggregate, and prepping concrete for applying coatings under 10 mils. | 40001104 |

BLUE Series—Hard to Medium Concrete

MOHS 7



DIAMOND Metal Double Segment—Hard to Medium Bond

| GRIT | DESCRIPTION | PART # |
|------|--|----------|
| 6 | Designed for coating removal, thin mastic removal, exposing large aggregate, and prepping concrete for applying coatings 10-25 mils. | 40006822 |
| 16 | Designed for coating removal, thin mastic removal, exposing large aggregate, and prepping concrete for applying coatings 10-20 mils. | 40001101 |
| 30 | Designed for coating removal, thin mastic removal, exposing large aggregate, and prepping concrete for applying coatings under 10 mils. | 40001106 |

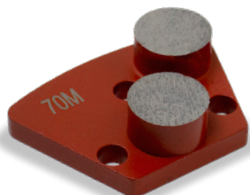
RED Series—Medium Concrete

MOHS 6



DIAMOND Metal Double Segment—Medium Bond

| GRIT | DESCRIPTION | PART # |
|------|--|----------|
| 6 | Designed for coating removal, thin mastic removal, exposing large aggregate, and prepping concrete for applying coatings 10-25 mils. | 40006815 |
| 16 | Designed for coating removal, thin mastic removal, exposing large aggregate, and prepping concrete for applying coatings 10-20 mils. | 40001100 |
| 30 | Designed for coating removal, thin mastic removal, exposing large aggregate, and prepping concrete for applying coatings under 10 mils. | 40001105 |



ROUND Metal Double Segment—Medium Bond

| GRIT | DESCRIPTION | PART # |
|------|---|----------|
| 70 | Designed as a first step for new concrete polishing, honing concrete, and removing scratches from courser grits. Ideal for concrete stains. | 40006501 |



CAP-CUTTER Metal Double Segment—Medium Bond

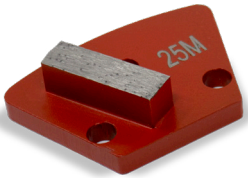
| GRIT | DESCRIPTION | PART # |
|------|--|----------|
| 16 | Designed to remove the dense cap on a hard-troweled concrete floor more efficiently than standard tools. The alternating layers of hard and soft metal/diamond and 16 grit diamond make are more effective than tools with larger size diamonds. | 40006792 |

METAL BOND

Simiron has a complete range of metal bond tooling designed to ensure maximum life and performance rate for all concrete floors depending on hardness. Every metal bond series corresponds with the MOH's hardness scale, helping contractors confidently know what metal bond series to use on every concrete grinding project.

RED Series—Medium Concrete

MOHS 6



RECTANGLE Metal Double Segment—Medium Bond

| GRIT | DESCRIPTION | PART # |
|------|--|----------|
| 25 | Single segment diamond for smaller grinders with less head pressure. Designed for coating removal, thin mastic removal, exposing large aggregate, and prepping concrete for applying coatings under 10 mils. | 40006808 |



3" 10-SEGMENT Metal Double Segment—Medium Bond

| GRIT | DESCRIPTION | PART # |
|------|--|----------|
| 16 | Excellent for grinding medium to hard concrete as a first step in the polishing process. Extremely long life and excellent scratch pattern for concrete polishing process. | 40008192 |
| 30 | Excellent for grinding medium to hard concrete as a first step in the polishing process. Extremely long life and excellent scratch pattern for concrete polishing process. | 40006518 |
| 70 | Excellent for grinding medium to hard concrete as a first step in the polishing process. Extremely long life and excellent scratch pattern for concrete polishing process. | 40006525 |
| 120 | Excellent for grinding medium to hard concrete as a first step in the polishing process. Extremely long life and excellent scratch pattern for concrete polishing process. | 40006532 |



LIGHTNING 7" Cup Wheel—Medium Bond

| GRIT | DESCRIPTION | PART # |
|------|--|----------|
| 30 | Very fast and aggressive cup wheel designed for the removal of coatings. Will leave a uniform finish for a great first step in polishing or coating application. | 40006259 |



S-SHAPE 7" Cup Wheel—Medium Bond

| GRIT | DESCRIPTION | PART # |
|------|---|----------|
| 30 | The aggressive S segment shape has more leading edges to expose more diamonds leading to faster prep and coating removal. | 40006266 |



ARROW 7" Cup Wheel—Medium Bond

| GRIT | DESCRIPTION | PART # |
|------|--|----------|
| 30 | High performance cutting wheel. The unique arrow shape segments work great for cutting hard surfaces and removing thin glue. | 40006273 |



DOUBLE ROW 7" Cup Wheel—Medium Bond

| GRIT | DESCRIPTION | PART # |
|------|--|----------|
| 30 | Double row diamond segments are designed for smooth grinding and extra life. Can be used wet or dry. | 40006549 |

REMOVAL

Simiron has a complete line of removal tooling to maximize the efficiency of removing thin to thick coatings or systems. Using these removal tools saves REMOVAL time and money to finish the job as quickly as possible.

REMOVAL TOOLING



PCD Pirahna Large Tooth

| TOOLING CATEGORY | DESCRIPTION | PART # | SIDE |
|------------------|---|----------|------|
| REMOVAL | The most aggressive removal tool available. These PCD diamonds are designed to rip through the toughest and thickest of coatings. | 40006938 | R |
| REMOVAL | The most aggressive removal tool available. These PCD diamonds are designed to rip through the toughest and thickest of coatings. | 40006846 | L |



PCD 3 Round With Wear Bar

| TOOLING CATEGORY | DESCRIPTION | PART # | SIDE |
|------------------|--|----------|------|
| REMOVAL | Removal tool for thick coating removal. Designed with a wear bar that helps remove guage marks during the removal process saving time and money. | 40006921 | R |
| REMOVAL | Removal tool for thick coating removal. Designed with a wear bar that helps remove guage marks during the removal process saving time and money. | 40006860 | L |



PCD Pirahna Small Tooth

| TOOLING CATEGORY | DESCRIPTION | PART # | SIDE |
|------------------|---|----------|------|
| REMOVAL | Very aggressive and fast removal tool designed to rip through the tough coatings. | 40006914 | R |
| REMOVAL | Very aggressive and fast removal tool designed to rip through the tough coatings. | 40006853 | L |



PCD 7" Cup Wheel—9 - 1/4"

| TOOLING CATEGORY | DESCRIPTION | PART # |
|------------------|--|----------|
| REMOVAL | PCD Cup Wheels are designed for fast removal of epoxy, paint, glue, acrylics, mastics, adhesives, urethane, elastic coatings, etc. concrete surfaces. The quarter-round segments on our wheels are for thicker coatings up to 3mm (1/8 in) and provide longer wheel life than PCD chip segment wheels. | 40006280 |



PCD 7" Cup Wheel—12 - 1/8"

| TOOLING CATEGORY | DESCRIPTION | PART # |
|------------------|--|----------|
| REMOVAL | These advanced PCD Cup Wheels are more aggressive and last longer than your traditional diamond cup wheels. They're designed for fast productivity for removal of adhesives, epoxy, urethane, paint, mastic, and other floor coatings. | 40006303 |



PCD 7" Cup Wheel—6 - 1/4"

| TOOLING CATEGORY | DESCRIPTION | PART # |
|------------------|--|----------|
| REMOVAL | PCD Cup Wheels are designed for fast removal of epoxy, paint, glue, acrylics, mastics, adhesives, urethane, elastic coatings, etc. concrete surfaces. The quarter-round segments on our wheels are for thicker coatings up to 3mm (1/8 in) and provide longer wheel life than PCD chip segment wheels. | 40006297 |

Simiron Ceramic Cup Wheels make edgework easy. These cup wheels eliminate the need for metal bond cup wheels and eliminate steps off edging while providing great results.

CERAMIC—Cup Wheels



CERAMIC 7" Cup Wheel

| GRIT | DESCRIPTION | PART # |
|------|--|----------|
| 30 | Ceramic grinding cup wheels are designed to replace metal grinding cups. They cut far faster than metals and leave a smooth scratch pattern for such an aggressive grinding tool. Excellent for concrete polishing | 40006310 |



CERAMIC 7" Cup Wheel

| GRIT | DESCRIPTION | PART # |
|------|--|----------|
| 50 | Ceramic grinding cup wheels are designed to replace metal grinding cups. They cut far faster than metals and leave a smooth scratch pattern for such an aggressive grinding tool. Excellent for concrete polishing | 40006327 |



CERAMIC 7" Cup Wheel

| GRIT | DESCRIPTION | PART # |
|------|--|----------|
| 100 | Ceramic grinding cup wheels are designed to replace metal grinding cups. They cut far faster than metals and leave a smooth scratch pattern for such an aggressive grinding tool. Excellent for concrete polishing | 40006334 |



CERAMIC 7" Cup Wheel

| GRIT | DESCRIPTION | PART # |
|------|--|----------|
| 200 | Ceramic grinding cup wheels are designed to replace metal grinding cups. They cut far faster than metals and leave a smooth scratch pattern for such an aggressive grinding tool. Excellent for concrete polishing | 40006341 |



CERAMIC 7" Cup Wheel

| GRIT | DESCRIPTION | PART # |
|------|--|----------|
| 400 | Ceramic grinding cup wheels are designed to replace metal grinding cups. They cut far faster than metals and leave a smooth scratch pattern for such an aggressive grinding tool. Excellent for concrete polishing | 40006358 |



POLISHING PAD—Hybrid



DRY Hybrid Resin Polishing pad

| GRIT | DESCRIPTION | PART # |
|------|--|----------|
| 30 | Can be the starting point on a cream or salt and pepper application. Sometimes needed to remove cure and seal from new construction. | 40006365 |



DRY Hybrid Resin Polishing pad

| GRIT | DESCRIPTION | PART # |
|------|---|----------|
| 50 | Can be the starting point on a cream or salt and pepper application. Removed 30 grit resin scratches. | 40006372 |



DRY Hybrid Resin Polishing pad

| GRIT | DESCRIPTION | PART # |
|------|---|----------|
| 100 | Can be the starting point on a cream or salt and pepper application. Removed 50 grit resin scratches. | 40006389 |



DRY Hybrid Resin Polishing pad

| GRIT | DESCRIPTION | PART # |
|------|---|----------|
| 200 | Removes 100 grit resin scratches or next step after transitioning from hybrid resins. | 40006396 |



DRY Hybrid Resin Polishing pad

| GRIT | DESCRIPTION | PART # |
|------|---|----------|
| 400 | Removes 200 grit resin scratches or next step after transitioning from hybrid resins. | 40006402 |



DRY Hybrid Resin Polishing pad

| GRIT | DESCRIPTION | PART # |
|------|---|----------|
| 800 | Removes 400 grit resin scratches or next step after transitioning from hybrid resins. | 40006419 |



DRY Hybrid Resin Polishing pad

| GRIT | DESCRIPTION | PART # |
|------|---|----------|
| 1500 | Removes 800 grit resin scratches or next step after transitioning from hybrid resins. | 40006426 |



DRY Hybrid Resin Polishing pad

| GRIT | DESCRIPTION | PART # |
|------|--|----------|
| 3000 | Removes 1500 grit resin scratches or next step after transitioning from hybrid resins. | 40006433 |

ADAPTERS

These SIMIRON approved adapters easily attaches to floor grinding machines, and allows the fast change system to be outfitted with diamond tools. Installation is very simple and quick which simply slides in the adapter and attach the tooling.

ADAPTERS—Quick Change



HUSQVARNA Quick Change Adapter

| DESCRIPTION | PART # |
|--|----------|
| Quick change adapter will attach to a Husqvarna machine allowing the use of Simiron tooling. | 40006945 |



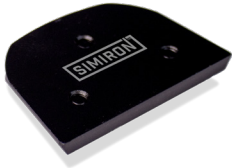
SASE Quick Change Adapter

| DESCRIPTION | PART # |
|---|----------|
| Quick change adapter will attach to a SASE machine allowing the use of Simiron tooling. | 40006969 |



HTC Quick Change Adapter

| DESCRIPTION | PART # |
|--|----------|
| Quick change adapter will attach to a HTC machine allowing the use of Simiron tooling. | 40006976 |



LAVINA Quick Change Adapter

| DESCRIPTION | PART # |
|---|----------|
| Quick change adapter will attach to a Lavina machine allowing the use of Simiron tooling. | 40006396 |





SIMIRON™